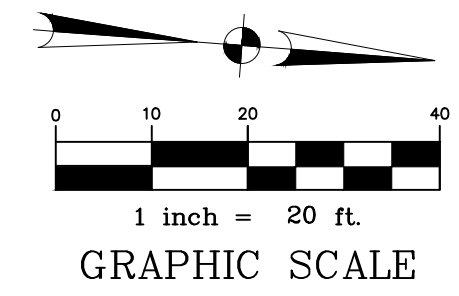


BENCHMARK:  
MONUMENT NAME 10 GPS MONU 1995 IS A BRASS CAP SET  
IN CONCRETE STAMPED "CITY OF PEARLAND 10 GPS MONU,  
1995" LOCATED ON THE SOUTH BOUND HIGHWAY 288  
APPROXIMATELY 2,400 FEET SOUTH OF F.M. 518 AND 21  
FEET WEST FROM THE WEST EDGE OF ASPHALT.  
ELEVATION = 59.29' (NGVD 1929, 1987 ADJUSTMENT)

TEMPORARY BENCHMARK "A":  
BOX CUT ON H2-INLET LOCATED ON THE NORTH SIDE OF  
COUNTY ROAD 101 NEAR THE SOUTHWEST CORNER OF THE  
PROPERTY, AS SHOWN.  
ELEVATION = 64.44'

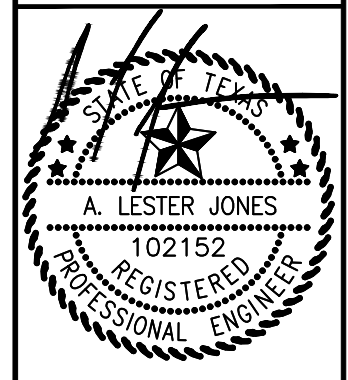
TEMPORARY BENCHMARK "B":  
BOX CUT ON RCP LOCATED ON THE EAST SIDE OF COUNTY  
ROAD 94 NEAR THE EAST PORTION OF THE PROPERTY, AS  
SHOWN.  
ELEVATION = 61.48'



COUNTY ROAD NO. 94  
(WIDTH VARIES)  
(B.C.C.F. NO. 2009014127)

No.	REVISIONS	DATE

**ALJ Lindsey**  
Civil Engineers & Surveyors  
Houston, TX 77069  
281-301-5955  
PRNF-11526



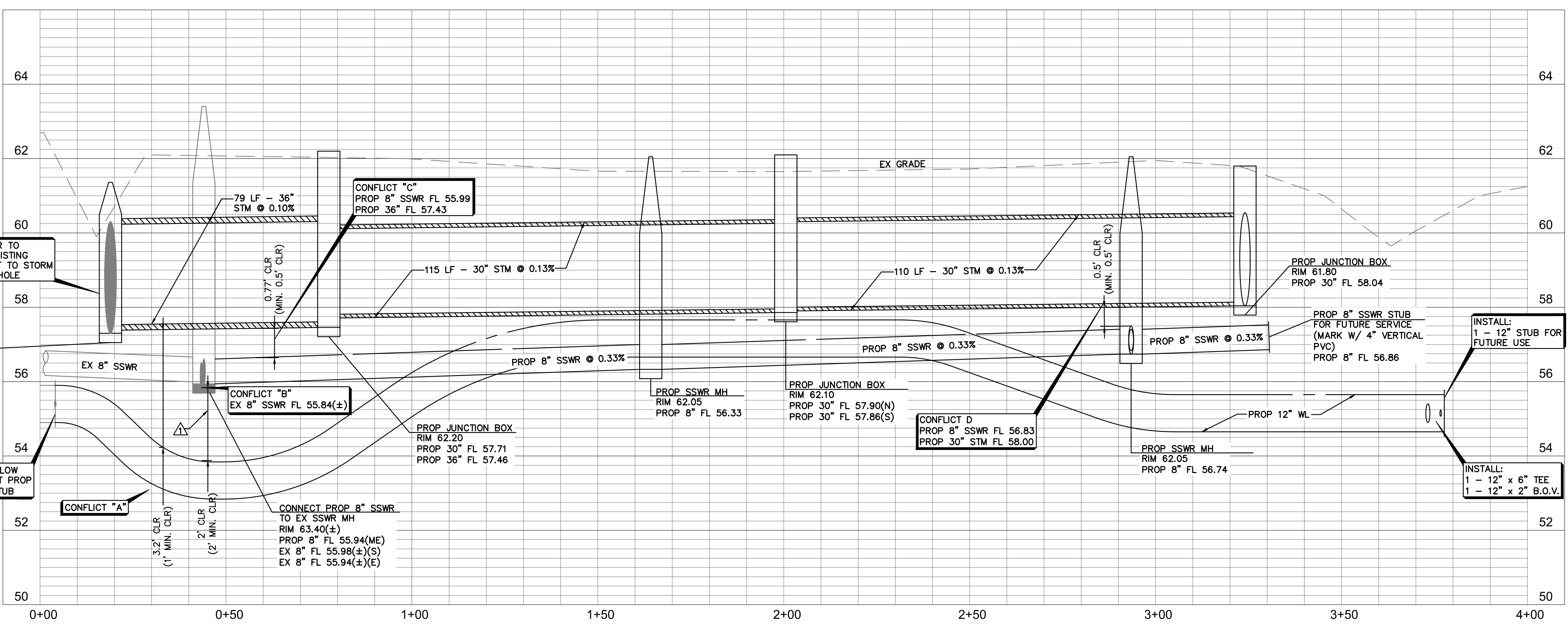
15 NOVEMBER 2018

ALJ PROJECT NO. 008.18.CV.062  
DATE: NOV. 2018  
SCALE: 1"=20'  
DRAWN BY: KD  
CHECKED BY: ALJ

**UTILITY PLAN & PROFILE**

WATER, SANITARY, & STORM  
EXTENSIONS SERVING  
4.3013 ACRE TRACT  
CITY OF MANVEL,  
BRAZORIA COUNTY, TEXAS

SHEET  
**C3.0**



UTILITY PROFILE  
SCALE: 1"=20' H; 1"=2' V

**LEGEND**

SS	W/ CLEAN OUT	PROPOSED SANITARY SEWER
WL		PROPOSED WATER LINE
SS		PROPOSED STORM SEWER
SS		EX. STORM SEWER
WL		EX. WATER LINE
SS		EX. SANITARY SEWER LINE
100		EX. CONTOUR

- GENERAL NOTES**
- REFERENCE WATER, SANITARY, & STORM SEWER LINE NOTES SHEET C0.1 FOR PIPE MATERIAL AND CONSTRUCTION REQUIREMENTS.
  - FOR CITY OF MANVEL JUNCTION BOX, STORM MANHOLE, SANITARY SEWER MANHOLE, AND BACKFILL DETAILS, REFERENCE SHEET C5.0.
  - CONTRACTOR RESPONSIBLE FOR ANY REMOVAL/REPLACEMENT OF ANY EXISTING FEATURES IN THE R.O.W. AND WITHIN ANY LANDSCAPED AREA.
  - CONTRACTOR IS RESPONSIBLE FOR TRAFFIC CONTROL PLAN & TRAFFIC CONTROL IMPLEMENTATION, NO SEPARATE PAY.

**SANITARY & WATER LINE CROSSINGS KEYED NOTE:**

FOR WATER & SANITARY SEWER CROSSING, CONTRACTOR IS TO PLACE 1 FULL SECTION (MINIMUM OF 18 FT) OF SANITARY SEWER AND WATER LINE AND PROVIDE RESTRAINED JOINTS AT LEAST 9 FT FROM THE CENTERLINE OF THE CROSSING AND EMBED WITH COMPACTED STABILIZED SAND TO 1' BEYOND JOINTS ON EACH END.

CALL BEFORE YOU DIG  
TEXAS ONE CALL PARTICIPANTS REQUEST  
72 HOURS NOTICE BEFORE YOU DIG, DRILL  
OR BLAST - STOP CALL  
TEXAS ONE CALL SYSTEM  
1-800-344-8377  
IN HOUSTON  
(713)-223-4567