

IRRIGATION SPECIFICATIONS:

- General Contractor to provide a 2" dedicated irrigation water meter and at least 4 LF. of capped-off service line in general location shown.
- General Contractor to provide a 110V outlet or junction box for timer/controller at exterior wall in general location shown.
- General Contractor to provide 4" PVC sleeves in areas indicated under driveways and walkways.
- General Contractor to show location of all utility lines to irrigation contractor.
- Line layout is diagrammatic and should be adjusted in field to accommodate existing conditions.
- Irrigation Contractor to obtain all necessary irrigation permits and inspections.
- All irrigation work to conform to local codes and requirements and be installed by a licensed professional.
- Value control wires to be 14 LF. AWG.

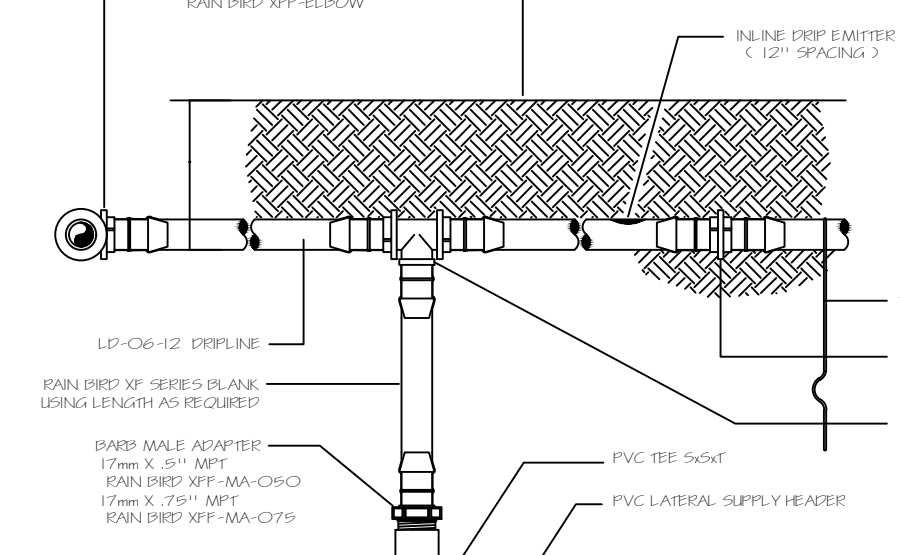
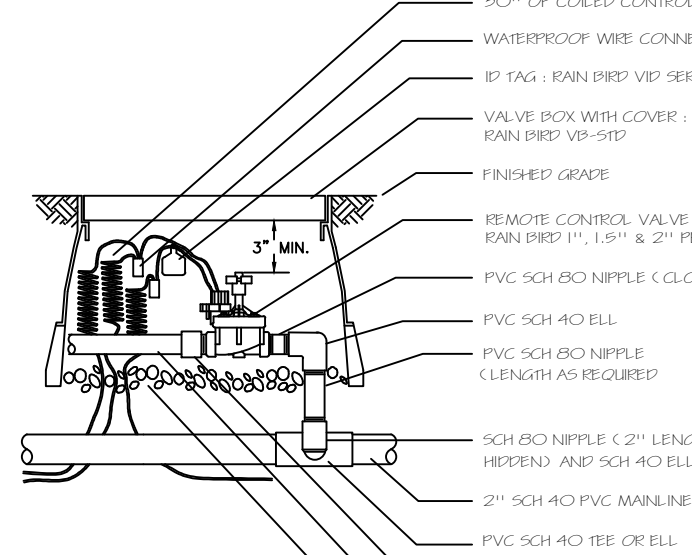
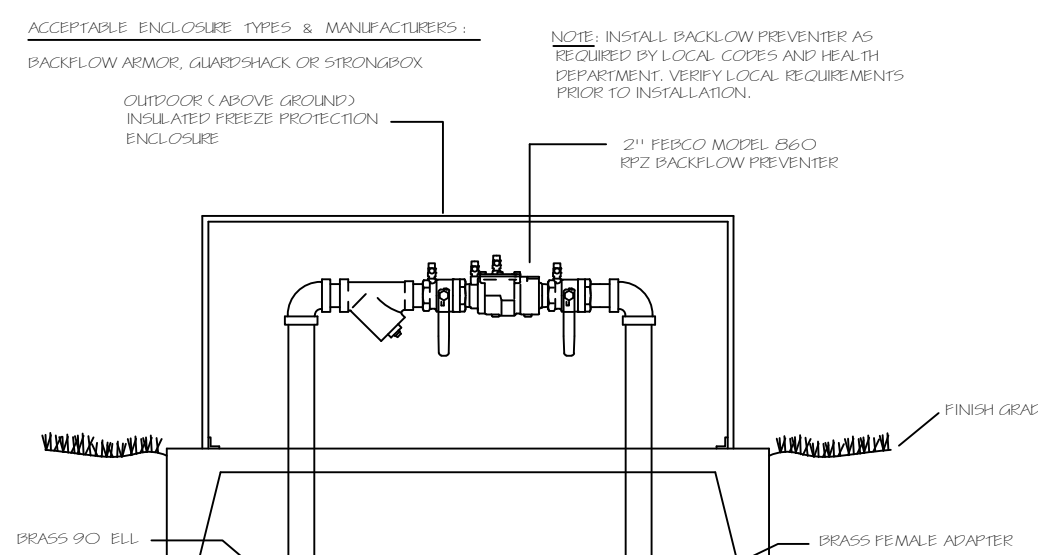
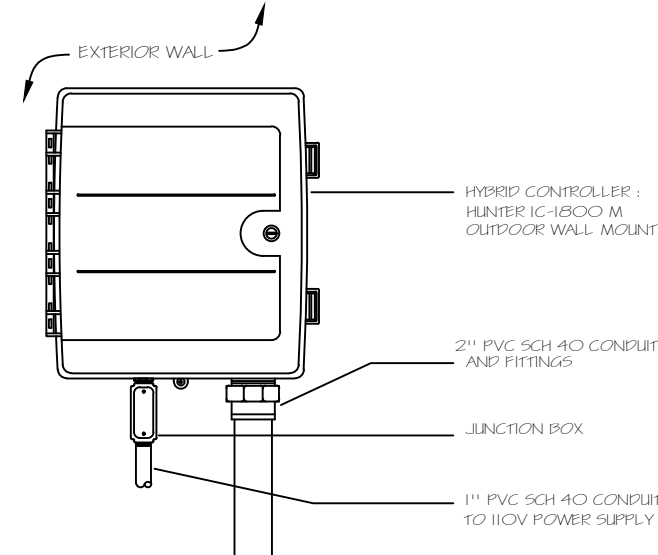
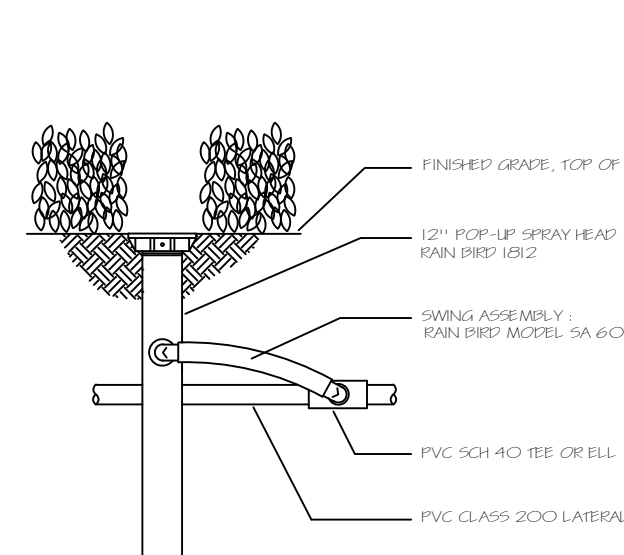
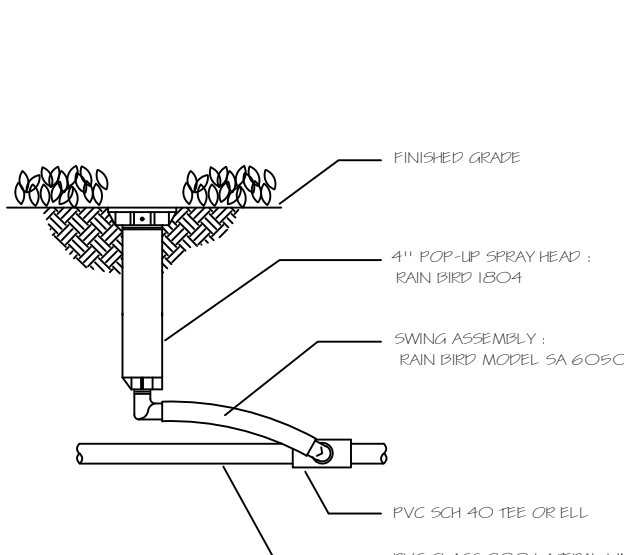
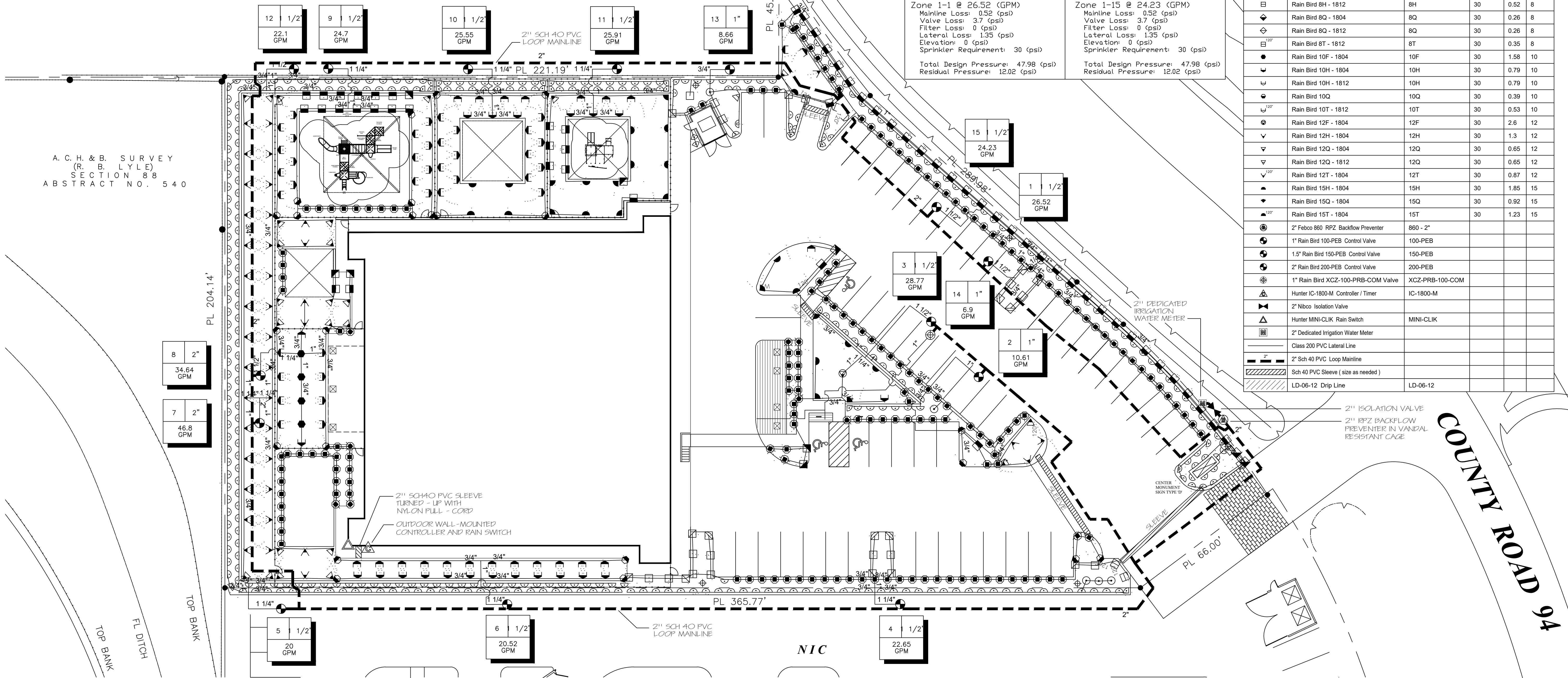
- All valves to have appropriate valve cover "boxes".
- Dig trenches to support pipe continuously along bottom of trench at an even grade. All lines shall be 12" - 18" deep. Coordinate any machine trenching with General Contractor to ensure safety of all on-site utilities.
- All glued connections to be primed first with primer. Great care should be taken not to drip blue primer or glue onto new concrete work and paving.
- Initial backfill material on all lines shall be of a fine granular nature with no foreign material larger than 1/2" in size. Backfill material will be tamped under and uniformly on both sides of the pipe for the full width and length of the pipe. Install backfill and tamp in 4" layers. Finished backfill to be free of voids. Top of backfill to be smooth and at an even grade with existing adjacent undisturbed soil surface after watering in. Any excess soil upon completion to be locally disposed of by Irrigation Contractor.
- After all is in place and connected system will be thoroughly flushed

- without nozzles in heads to remove all dirt and debris from lines. Install nozzles and filters in heads only after adequate flushing has been completed.
- Test integrity of main line at 100 psi for 4 hours minimum. Adjust all valve flows, nozzles and rotary arcs for optimum coverage / wetting. Coverage may be inspected by Landscape Architect, Owner or Landscape Contractor at their discretion. All shall work together to achieve a good system that will sufficiently water all new plantings and turf.
- Irrigation Contractor to maintain a clean and safe jobsite at all times. Excess excavated soils, accumulations of trash, pieces of pipe, boxes etc. to be removed from jobsite by Irrigation Contractor daily and at the end of the project.
- The Owner and Landscape Architect reserve the right to inspect the progress of the project and any or all materials being used at any time. Such materials, progress or procedures will be subject to approval or rejection at that time and promptly followed up in writing to all concerned parties.

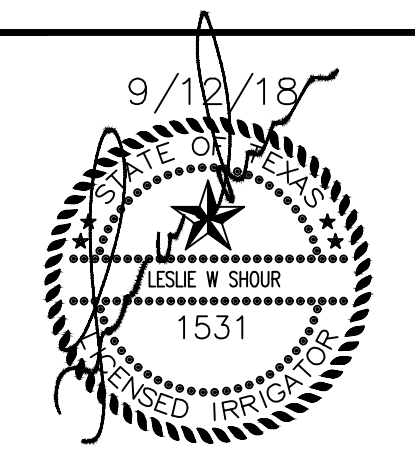
FIRST AND LAST RUN - SETS:

Run Set: 1-1	Run Set: 1-15
Water Source 1 Description: New Water Source Type: Meter Static Pressure: 60 (psi) Service Line: 0.004 (psi) Meter Loss: 0.68 (psi)	Water Source 1 Description: New Water Source Type: Meter Static Pressure: 60 (psi) Service Line: 0.004 (psi) Meter Loss: 0.68 (psi)
Mean System Static Pressure: 60 (psi) Service Line Loss: 0.004 (psi) Meter Loss: 0.68 (psi) Backflow Loss: 11.721 (psi) Master Valve Loss: 0 (psi) Filter Loss: 0 (psi)	Mean System Static Pressure: 60 (psi) Service Line Loss: 0.004 (psi) Meter Loss: 0.68 (psi) Backflow Loss: 11.721 (psi) Master Valve Loss: 0 (psi) Filter Loss: 0 (psi)
Zone 1-1 @ 26.52 (GPM) Mainline Loss: 0.52 (psi) Valve Loss: 3.7 (psi) Filter Loss: 0 (psi) Lateral Loss: 1.35 (psi) Elevation: 0 (psi) Sprinkler Requirement: 30 (psi)	Zone 1-15 @ 24.23 (GPM) Mainline Loss: 0.52 (psi) Valve Loss: 3.7 (psi) Filter Loss: 0 (psi) Lateral Loss: 1.35 (psi) Elevation: 0 (psi) Sprinkler Requirement: 30 (psi)
Total Design Pressure: 47.98 (psi) Residual Pressure: 12.02 (psi)	Total Design Pressure: 47.98 (psi) Residual Pressure: 12.02 (psi)

IRRIGATION LEGEND					
Symbol	Description	Part #	Pressure	Flow	Radius
⊙	Rain Bird 5F - 1812	5F	30	0.41	5
⊙	Rain Bird 5H - 1804	5H	30	0.2	5
⊙	Rain Bird 5H - 1812	5H	30	0.2	5
⊙	Rain Bird 5Q - 1804	5Q	30	0.1	5
⊙	Rain Bird 5Q - 1812	5Q	30	0.1	5
⊙	Rain Bird 5T - 1804	5T	30	0.13	5
⊙	Rain Bird 5T - 1812	5T	30	0.13	5
⊙	Rain Bird 8F - 1812	8F	30	1.05	8
⊙	Rain Bird 8H - 1804	8H	30	0.52	8
⊙	Rain Bird 8H - 1812	8H	30	0.52	8
⊙	Rain Bird 8Q - 1804	8Q	30	0.26	8
⊙	Rain Bird 8Q - 1812	8Q	30	0.26	8
⊙	Rain Bird 8T - 1812	8T	30	0.35	8
⊙	Rain Bird 10F - 1804	10F	30	1.58	10
⊙	Rain Bird 10H - 1804	10H	30	0.79	10
⊙	Rain Bird 10H - 1812	10H	30	0.79	10
⊙	Rain Bird 10Q	10Q	30	0.39	10
⊙	Rain Bird 10T - 1812	10T	30	0.53	10
⊙	Rain Bird 12F - 1804	12F	30	2.6	12
⊙	Rain Bird 12H - 1804	12H	30	1.3	12
⊙	Rain Bird 12Q - 1804	12Q	30	0.65	12
⊙	Rain Bird 12Q - 1812	12Q	30	0.65	12
⊙	Rain Bird 12T - 1804	12T	30	0.87	12
⊙	Rain Bird 15H - 1804	15H	30	1.85	15
⊙	Rain Bird 15Q - 1804	15Q	30	0.92	15
⊙	Rain Bird 15T - 1804	15T	30	1.23	15
⊙	2" Febco 860 RPZ Backflow Preventer	860 - 2"			
⊙	1" Rain Bird 100-PEB Control Valve	100-PEB			
⊙	1.5" Rain Bird 150-PEB Control Valve	150-PEB			
⊙	2" Rain Bird 200-PEB Control Valve	200-PEB			
⊙	1" Rain Bird XCZ-100-PRB-COM Valve	XCZ-PRB-100-COM			
⊙	Hunter IC-1800-M Controller / Timer	IC-1800-M			
⊙	2" Nibco Isolation Valve				
⊙	Hunter MINI-CLIK Rain Switch	MINI-CLIK			
⊙	2" Dedicated Irrigation Water Meter				
⊙	Class 200 PVC Lateral Line				
⊙	2" Sch 40 PVC Loop Mainline				
⊙	Sch 40 PVC Sleeve (size as needed)				
⊙	LD-06-12 Drip Line	LD-06-12			



INTEGRATED LANDSCAPE ARCHITECTURE
765 ROLLING OAKS DRIVE
DRIFTWOOD, TEXAS 78619
E-MAIL : INFO@LANDARCHT.COM
PHONE : 713-973-7851



ISSUES AND REVISIONS

NO.	DATE	DESCRIPTION
09/12/18		ISSUE FOR PERMIT

IVY KIDS EARLY LEARNING CENTER
4434 COUNTY ROAD 94
MANVEL, TEXAS 77578

OWNER / DEVELOPER :
Lone Star Academics and Childcare, LLC

IRRIGATION PLAN
SCALE : 1" = 20'

L1.0