

A. U. I. I. S
(HARRIS
ABSTRA

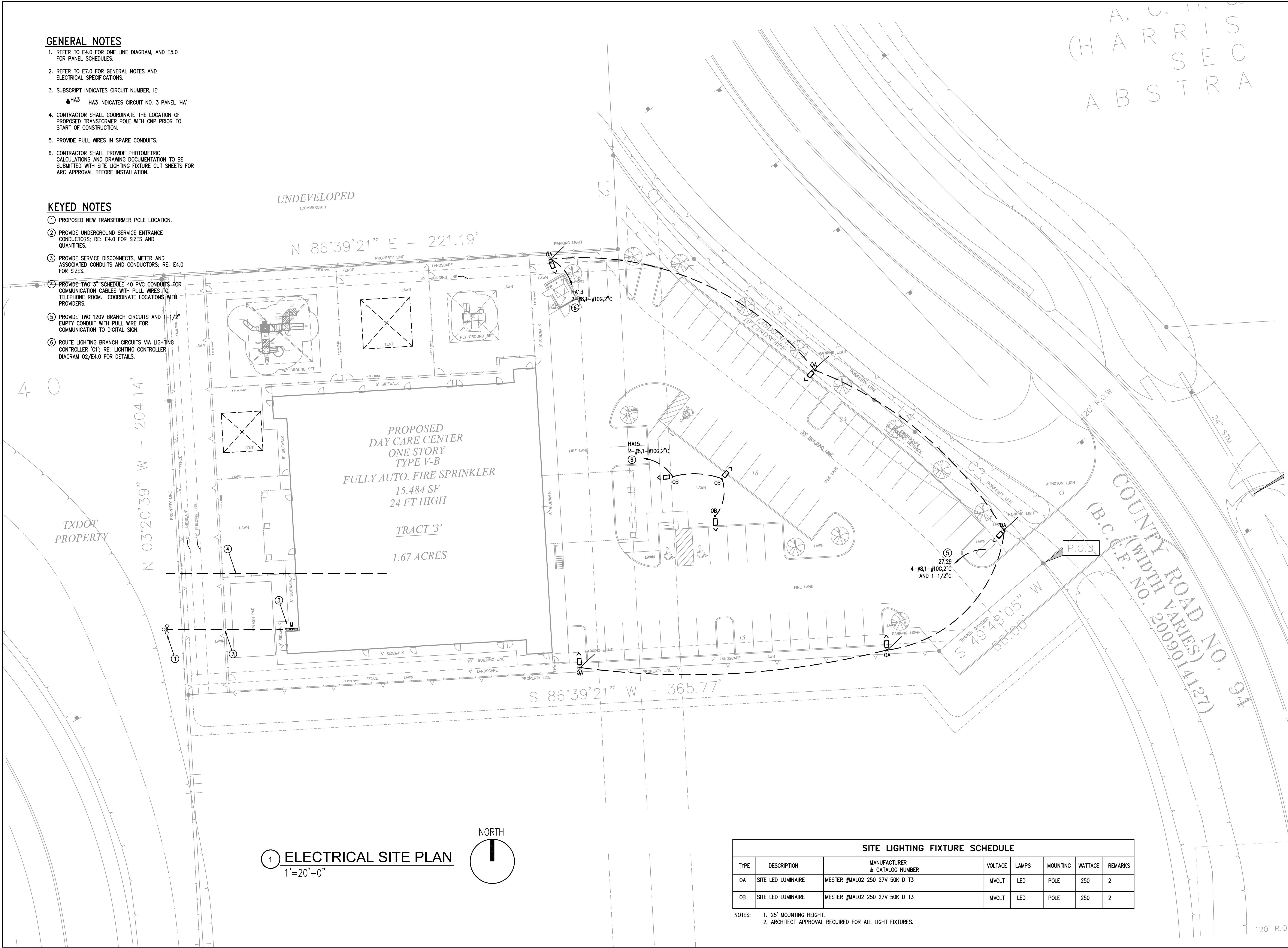
REVISIONS AND ISSUANCE		
NO.	DATE	DESCRIPTION
08/13/2018		PRICING
08/31/2018		PERMIT

GENERAL NOTES

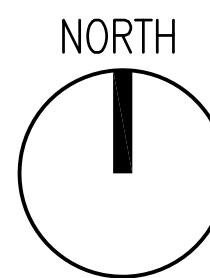
- REFER TO E4.0 FOR ONE LINE DIAGRAM, AND E5.0 FOR PANEL SCHEDULES.
- REFER TO E7.0 FOR GENERAL NOTES AND ELECTRICAL SPECIFICATIONS.
- SUBSCRIPT INDICATES CIRCUIT NUMBER, IE:
 • HA3 HA3 INDICATES CIRCUIT NO. 3 PANEL 'HA'
- CONTRACTOR SHALL COORDINATE THE LOCATION OF PROPOSED TRANSFORMER POLE WITH CNP PRIOR TO START OF CONSTRUCTION.
- PROVIDE PULL WIRES IN SPARE CONDUITS.
- CONTRACTOR SHALL PROVIDE PHOTOMETRIC CALCULATIONS AND DRAWING DOCUMENTATION TO BE SUBMITTED WITH SITE LIGHTING FIXTURE CUT SHEETS FOR ARC APPROVAL BEFORE INSTALLATION.

KEYED NOTES

- PROPOSED NEW TRANSFORMER POLE LOCATION.
- PROVIDE UNDERGROUND SERVICE ENTRANCE CONDUCTORS; RE: E4.0 FOR SIZES AND QUANTITIES.
- PROVIDE SERVICE DISCONNECTS, METER AND ASSOCIATED CONDUITS AND CONDUCTORS; RE: E4.0 FOR SIZES.
- PROVIDE TWO 3" SCHEDULE 40 PVC CONDUITS FOR COMMUNICATION CABLES WITH PULL WIRES TO TELEPHONE ROOM. COORDINATE LOCATIONS WITH PROVIDERS.
- PROVIDE TWO 120V BRANCH CIRCUITS AND 1-1/2" EMPTY CONDUIT WITH PULL WIRE FOR COMMUNICATION TO DIGITAL SIGN.
- ROUTE LIGHTING BRANCH CIRCUITS VIA LIGHTING CONTROLLER 'CI'; RE: LIGHTING CONTROLLER DIAGRAM 02/E4.0 FOR DETAILS.



1 ELECTRICAL SITE PLAN
1"=20'-0"



SITE LIGHTING FIXTURE SCHEDULE							
TYPE	DESCRIPTION	MANUFACTURER & CATALOG NUMBER	VOLTAGE	LAMPS	MOUNTING	WATTAGE	REMARKS
OA	SITE LED LUMINAIRE	MESTER #MAL02 250 27V 50K D T3	MVOLT	LED	POLE	250	2
OB	SITE LED LUMINAIRE	MESTER #MAL02 250 27V 50K D T3	MVOLT	LED	POLE	250	2

NOTES:
 1. 25' MOUNTING HEIGHT.
 2. ARCHITECT APPROVAL REQUIRED FOR ALL LIGHT FIXTURES.

IVY KIDS EARLY LEARNING CENTER
 4434 CR 94
 Manvel, Tx 77578

MEP Consultants
 BLK Engineering & Consulting Co.
 3423 Spring Arbor Ln.
 Sugar Land, TX 77479
 (1) 832 563 3127
 TBPE Firm #12672



DRAWING TITLE
ELECTRICAL SITE PLAN

DRAWN BY FK	CHECKED BY CK
DATE 05/10/2018	JOB NO. SEDONA LAKES
DRAWING NO. E1.0	