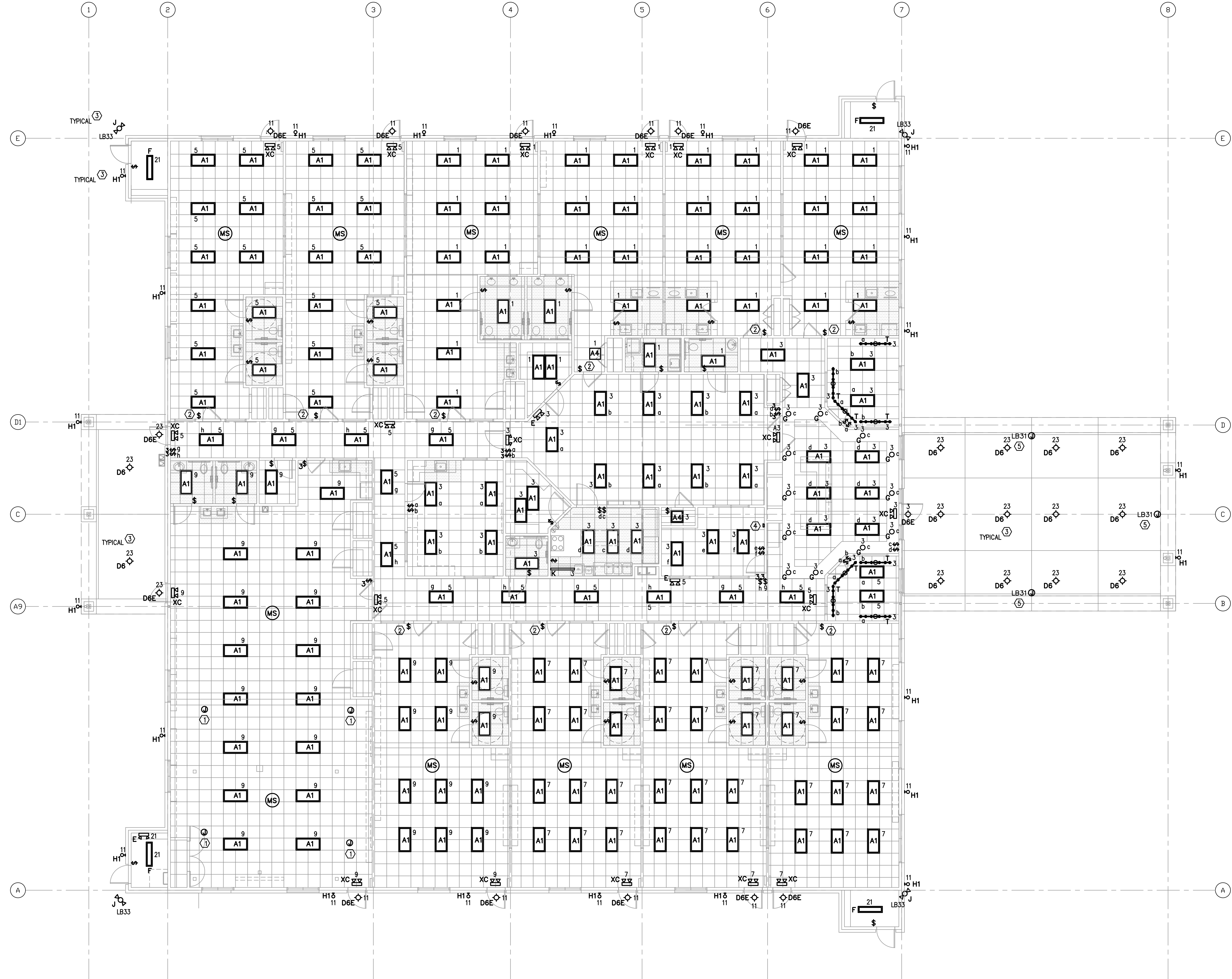


GENERAL NOTES

1. LIGHTING FIXTURE SUBSCRIPTS INDICATE FIXTURE TYPE, CONTROLLING SWITCH AND CIRCUIT NUMBER.
IE: A_3^5 A INDICATES FIXTURE TYPE.
3 INDICATES CIRCUIT NO. 3, PANEL HA
5 INDICATES CIRCUIT NO. 3, PANEL LB
5 INDICATES CONTROLLING SWITCH
2. REFER TO E5.0 FOR PANEL SCHEDULES. REFER TO E7.0 FOR LIGHT FIXTURE SCHEDULE.
3. PROVIDE UNSWITCHED HOT LEG TO EMERGENCY BATTERY BACKUP SYSTEM.
4. (MS) MOTION SENSOR FOR LOCAL ROOM.
PASSIVE INFRARED AREA SENSOR; WATTSTOPPER C1-200 WITH 30 MINUTE TIME DELAY.
5. MORE EXIT SIGNS AND EMERGENCY LIGHTING MAY BE REQUIRED AT FINALS.

KEYED NOTES

- ① LOCATION OF SURROUND SOUND SPEAKERS; COORDINATE EXACT LOCATION WITH OWNER PRIOR TO INSTALLATION.
- ② SWITCH SHALL BE KEYED LOW VOLTAGE, MOMENTARY CONTACT SWITCH (WATTSTOPPER LVS-1K OR PRIOR APPROVED EQUAL). SWITCH SHALL OPERATE AS MANUAL OVERRIDE TO CONNECTED OCCUPANCY SENSOR.
- ③ ROUTE BRANCH CIRCUIT VIA LIGHTING CONTROLLER 'C1'.
RE: LIGHTING CONTROLLER DIAGRAM E4.0.
- ④ LIGHTING CONTROLLER OVERRIDE SWITCH.
- ⑤ LOCATION OF SIGNAGE; COORDINATE EXACT LOCATION WITH OWNER PRIOR TO INSTALLATION.



1 LIGHTING PLAN
1/8" = 1'-0"

REVISIONS AND ISSUANCE

NO.	DATE	DESCRIPTION
08/13/2018	PRICING	
08/31/2018	PERMIT	

IVY KIDS EARLY LEARNING CENTER
4434 CR 94
Manvel, Tx 77578

MEP Consultants
BLK Engineering & Consulting Co.
3423 Spring Arbor Ln.
Sugar Land, TX 77479
(t) 832 563 3127
TBPE Firm #12672



DRAWING TITLE

ELECTRICAL LIGHTING PLAN

DRAWN BY FK	CHECKED BY CK
DATE 05/10/2018	JOB NO. SEDONA LAKES
DRAWING NO. E-2.0	