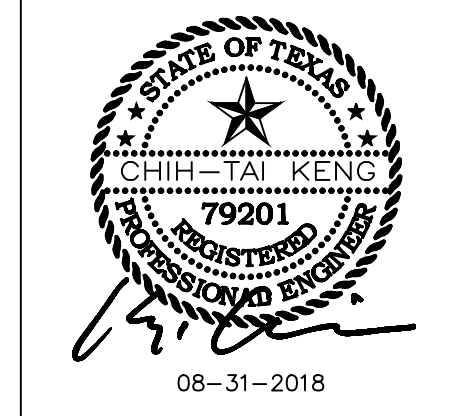


REVISIONS AND ISSUANCE		
NO.	DATE	DESCRIPTION
	08/13/2018	PRICING
	08/31/2018	PERMIT
	10/25/2018	OUTLET RELOCATE

**IVY KIDS EARLY LEARNING CENTER**  
**4434 CR 94**  
**Manvel, Tx 77578**

MEP Consultants  
 BLK Engineering & Consulting Co.  
 3423 Spring Arbor Ln.  
 Sugar Land, TX 77479  
 (713) 832-5693  
 TXBPE Firm #12672



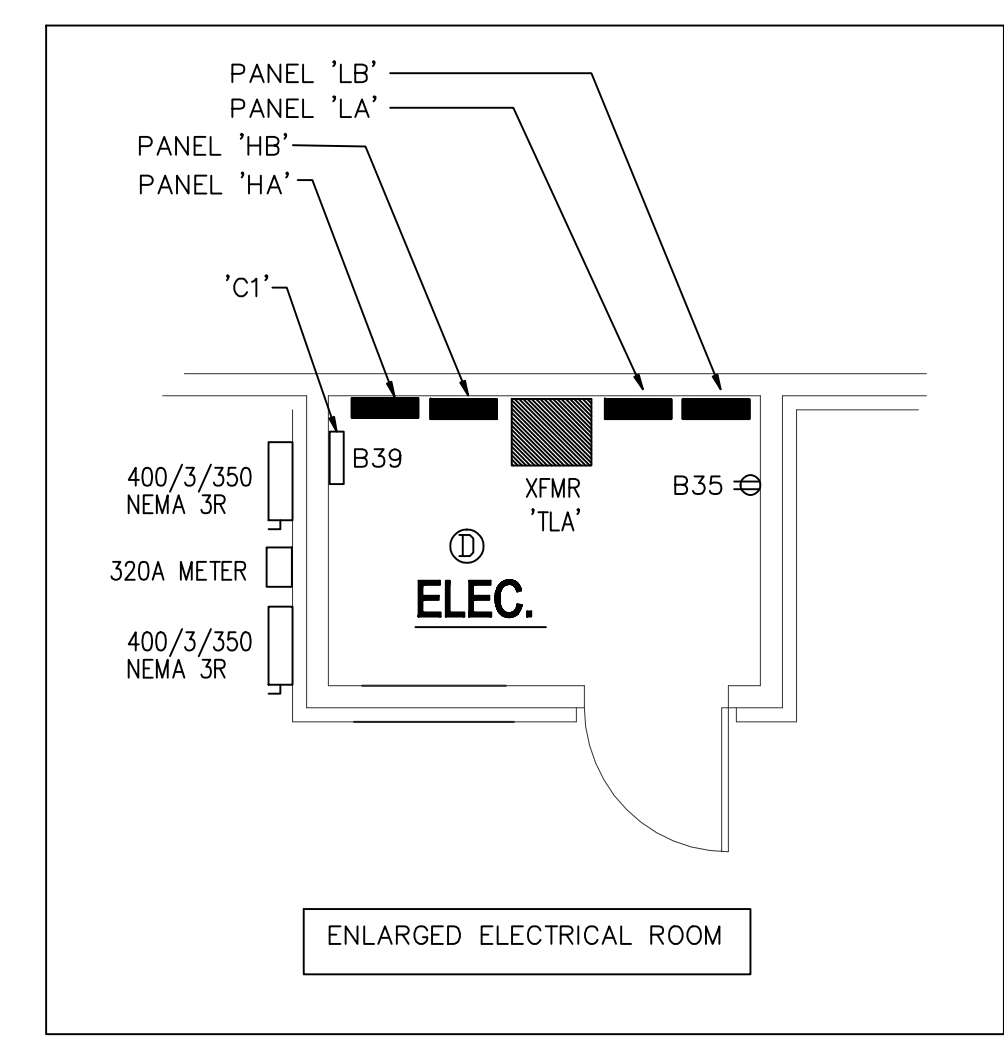
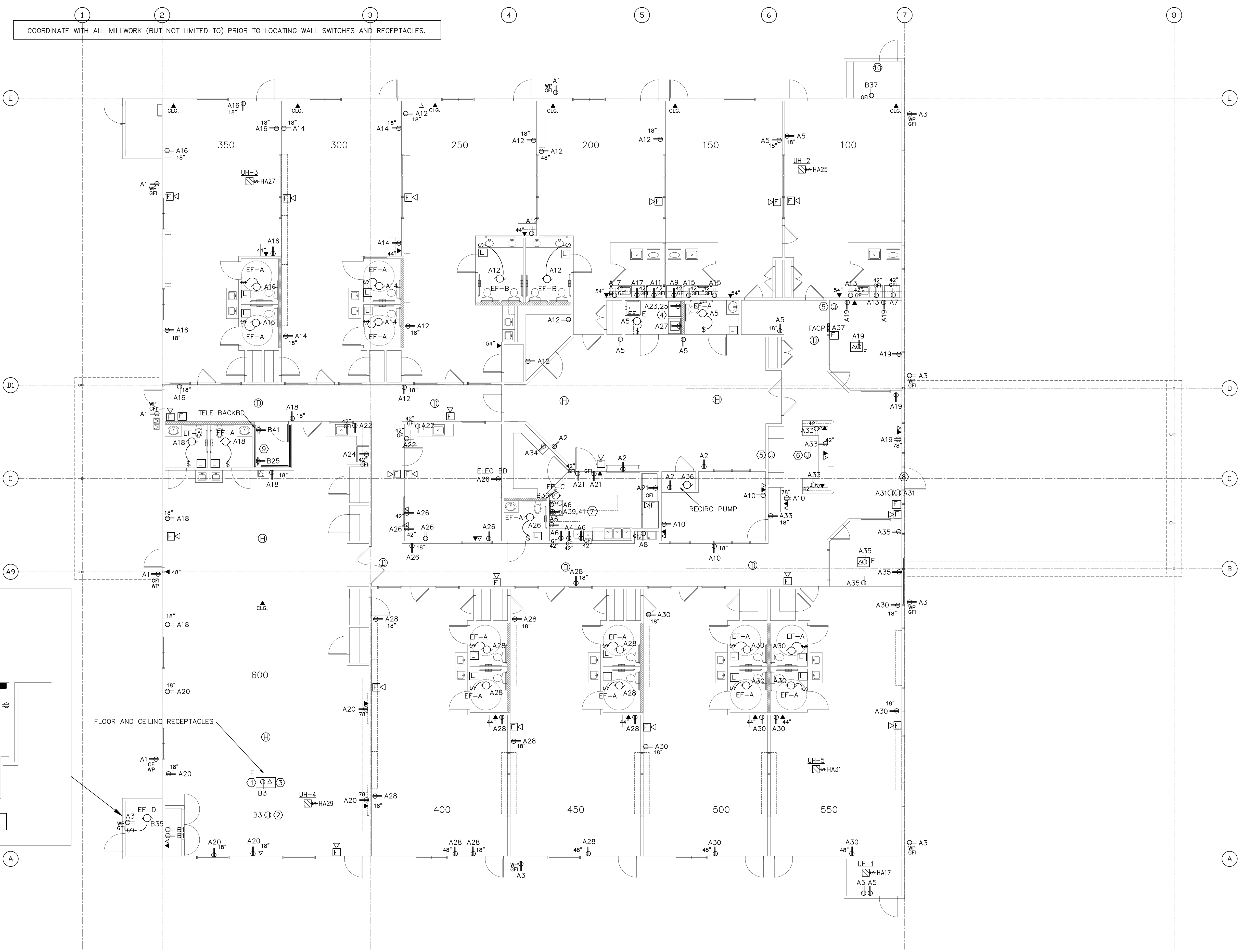
DRAWING TITLE	
<b>ELECTRICAL POWER PLAN</b>	
DRAWN BY FK	CHECKED BY CK
DATE 05/10/2018	JOB NO. SEDONA LAKES
DRAWING NO. <b>E-3.0</b>	

**GENERAL NOTES**

- REFER TO E4.0 FOR ONE LINE DIAGRAM AND E5.0 FOR PANEL SCHEDULES. REFER TO E7.0 FOR SPECIFICATIONS, NOTES, LIGHTING SCHEDULE, AND SYMBOLS.
- SUBSCRIPT INDICATES CIRCUIT NUMBER, IE:  
 ⓐA3 A3 INDICATES CIRCUIT NO. 3 PANEL 'LA'  
 B3 INDICATES CIRCUIT NO. 3 PANEL 'LB'  
 HA3 INDICATES CIRCUIT NO. 3 PANEL 'HA'
- COORDINATE THE INSTALLATION OF THE ELECTRICAL POWER TO THE KITCHEN EQUIPMENT WITH THE ACTUAL EQUIPMENT BEING INSTALLED. PROVIDE CIRCUIT BREAKERS, BRANCH CIRCUIT CONDUCTORS, J-BOXES, RECEPTACLES AND DISCONNECT SWITCHES AS REQUIRED BY THE EQUIPMENT INSTALLATION REQUIREMENTS AND THE NEC.
- PROVIDE GFCI TYPE RECEPTACLES OR CIRCUIT BREAKERS FOR ALL 120V RECEPTACLES IN THE KITCHEN PER THE NEC. COORDINATE RECEPTACLE MOUNTING HEIGHT WITH THE EQUIPMENT BEING INSTALLED.
- PROVIDE LISTED TAMPER-RESISTANT RECEPTACLES PER NEC 406.12(C).
- COORDINATE THE INSTALLATION OF ELECTRICAL RECEPTACLES WITH MILLWORK LOCATION, ARCHITECTURAL INTERIOR ELEVATIONS, ADA REQUIREMENTS, AND SURROUNDING FIELD CONDITIONS.
- ALL RESTROOM EXHAUST FANS SHALL BE INDEPENDENTLY SWITCHED FROM THE RESTROOM LIGHTING.

**KEYED NOTES**

- RECEPTACLE FOR POWER CONNECTION TO CEILING-MOUNTED PROJECTOR. COORDINATE EXACT LOCATION WITH OWNER PRIOR TO INSTALLATION.
- J-BOX FOR POWER CONNECTION TO THEATER SCREEN. COORDINATE EXACT LOCATION WITH OWNER PRIOR TO INSTALLATION.
- DATA CONNECTION TO CEILING-MOUNTED PROJECTOR. COORDINATE EXACT LOCATION WITH OWNER PRIOR TO INSTALLATION.
- PROVIDE NEMA 14-30R AND CIRCUIT OF 3#10, 1#10G, 3/4"C TO CIRCUIT NOTED FOR CONNECTION TO DRYER.
- ROUTE 1"C WITH PULLSTRING TO ELEC ROOM.
- ROUTE 2-2"C UNDER SLAB TO DESK LOCATION.
- PROVIDE NEMA 14-50R AND CIRCUIT OF #8, #10G, 1"C TO CIRCUIT NOTED FOR CONNECTION TO OVEN/RANGE.
- J-BOX FOR POWER CONNECTION TO FRONT DOOR LOCK, DOOR STRIKE, AND FINGER PRINT DEVICE. COORDINATE EXACT EQUIPMENT REQUIREMENTS WITH OWNER PRIOR TO PURCHASE AND INSTALLATION.
- ROUTE 2-3"C WITH PULLSTRING TO PROPERTY LINE FOR TELEPHONE/CATV UTILITY SERVICE. COORDINATE EXACT ROUTING AND DEMARK POINT WITH SERVICE PROVIDERS.
- POWER FOR FUTURE SITE WATER SYSTEM. COORDINATE WITH OWNER FOR FINAL LOCATION & REQUIREMENTS. FIELD VERIFY.
- OWNER TO PROVIDE FINAL FURNITURE LAYOUT AND CONFIRM ALL FLOOR OUTLET LOCATIONS PRIOR TO ROUGH-IN.



**1 POWER PLAN**  
 1/8" = 1'-0"